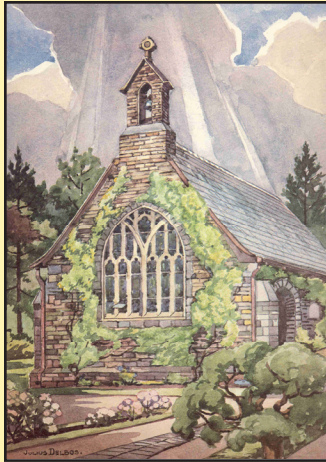




Palladium Musicum



St. Bede's Chapel by Julius Delbos

## 2010 SEASON INAUGURAL PROGRAM

INTRODUCING ST. BEDE'S CHAPEL

TO THE GREENWICH COMMUNITY

AS A PERFORMANCE VENUE

## SACRED MUSIC AT ST. BEDE'S CHAPEL

on the campus of the Westchester Fairfield Hebrew Academy

SATURDAY, JANUARY 30, 2010

7:30 PM TO 9:30 PM

270 LAKE AVENUE, GREENWICH, CT

FESTIVAL PROGRAM - HIGHLIGHTS

CHORAL AND INSTRUMENTAL MUSIC

**THE CHOATE ROSEMARY HALL CHAMBER CHORUS**

Ralph Valentine, Director

**Franz Joseph Haydn (1732-1809)**

*Missa brevis Sancti Johannes de Deo, H 22 no 7 ("Little Organ Mass")*

**THE CHOATE ROSEMARY HALL CHAMBER ORCHESTRA**

Philip Ventre, Director

**Felix Mendelssohn (1809-1847)**

*Symphony No. 5, Op. 107 in D Major ("Reformation")*

**ANNIE ROSEN, Mezzo-soprano, MANNES COLLEGE OF MUSIC**

**Gabriel Fauré (1845-1924)**

*"Pei Jesu" from Requeim, Op. 48*

**REDEDICATION OF THE ERNEST M. SKINNER ORGAN, OPUS 863, 1931**

**BRUCE NESWICK,**

Director of Cathedral Music and Organist, Cathedral Church of Saint John the Divine

**Johann Sebastian Bach (1685-1750)**

*Prelude and Fugue in E flat major, BWV 552 "St. Anne"*

*Catered reception concluding the evening*

During 2009 a little known Greenwich historic chapel, **St. Bede's Chapel**, has been revived as a public performance venue with interest and financial support from the Westchester Fairfield Hebrew Academy, local benefactors and arts lovers. Located on the campus of the former home of the Rosemary Hall School for Girls, St. Bede's Chapel is ideally suited for smaller vocal and instrumental ensembles. Originally designed by architect Theodore T. Blake, partner in the firm, Carrère and Hastings, and completed in 1909, this jewel in our midst, St. Bede's Chapel, offers perfect acoustics, an historic Ernest M. Skinner organ, a stunning interior, spectacular stained glass windows designed by two top London firms, and seating for 200 people. Throughout the history of Rosemary Hall, chaplains to the school were priests of nearby Christ Church, Greenwich. Beginning in 2010, Palladium Musicum, Inc. will offer instrumental, vocal, and organ programs and participating churches will offer organ concerts at St. Bede's Chapel.

**Single ticket purchase price - \$50. For information, telephone 203-661-6856 or email [apalladio@mac.com](mailto:apalladio@mac.com).**

Please make check payable to **Palladium Musicum, Inc.** and mail to 6 Stanwich Road, Greenwich, CT 06830.

Donation is tax deductible to the extent of the law. [www.palladiummusicum.org](http://www.palladiummusicum.org)

*Palladium Musicum, Inc. is a registered 501(c)(3) non-profit organization dedicated to music and the arts*